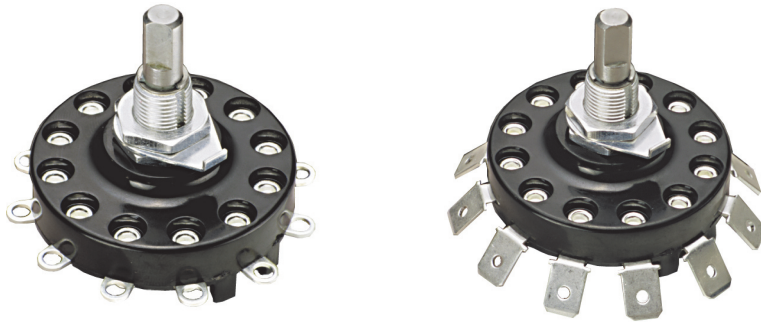


SERIES 19
2" Diameter, 15 Amp

FEATURES

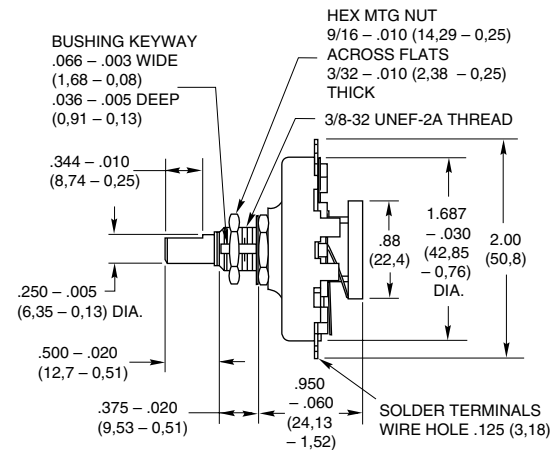


- UL Recognized
- Rugged Construction
- Choice of Termination



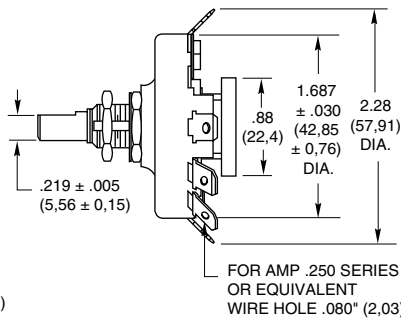
DIMENSIONS In inches (and millimeters)

Solder Lug Terminals

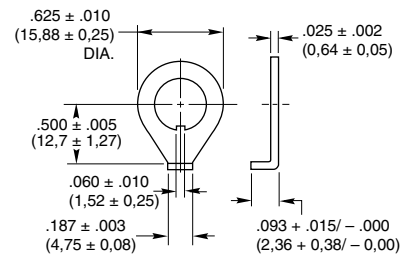


'Faston' Terminals

All dimensions not shown are the same as the Solder Lug Terminals.



Non-Turn Washer Detail



Grayhill part number and date code marked on label. Customer part number marked on request.

SPECIFICATIONS

Electrical Rating

Rated: UL Recognition: File Number E35289
15 Amps, 120 Vac, non-inductive load.
One Amp, 120 Vdc, non-inductive load.
Additional Grayhill Rating: 7.5 Amps, 220 Vac, non-inductive load.

This rating is based on the following criteria:
Overload—50 operations at 125% rated ac load and 150% rated DC load.

Endurance—6000 operations at rated load with 900 Vac dielectric strength before and after test.

Temperature Rise—Not to exceed 30°C when carrying rated ac load after endurance test.
Contacts will carry 20 Amps at 115 volts AC with 30°C maximum temperature rise.

Contact Resistance: (Measured at 2 Vdc and approximately 100 mA) for new switch approximately 10 milliohms.

Insulation Resistance: Approximately 100,000 Mohms. Between mutually insulated parts.

Voltage Breakdown: Approximately 2500 Vac between mutually insulated parts.

Materials and Finishes

- Rotor Contact:** Silver alloy
- Stator Contact:** Silver alloy
- Shaft:** 303 Stainless steel
- Stop Rivet:** Steel, tin/zinc-plated
- Mounting Bushing:** Brass, tin/zinc-plated
- Base and Drive Hub:** Heat resistant, electrical grade phenolic.

Mounting Nut: Brass, tin/zinc-plated or stainless steel.

Detent Mechanism: Brass, silver-plated

'Faston' Terminal: Brass, silver-plated

Solder Terminal: Brass, silver-plated

Mounting Hardware: One mounting nut 9/16" across flats, 3/32" thick and one non-turn washer (see detail) are supplied with each switch.

Additional Characteristics

Single Pole, Single Deck: 2 to 11 positions plus common 30° Indexing.

Contacts: Non-shorting type

Stops: A rivet provides the fixed stop on all switches. Minimum number of positions is 2, and maximum is 11. Terminal 12, the common, is isolated from rotation.

Rotational Torque: 12 to 36 ounce-inches on average for new switches.

Contact Force: Approximately 12 ounces

Shaft Flat Orientation: Opposite point of contact (see circuit diagram).

Circuit Diagram viewed from shaft end with switch in position #1



Available from your local Grayhill Distributor.

For prices and discounts, contact a local Sales Office, an authorized local Distributor or Grayhill.

ACCESSORIES

Screw Terminal Adapter

Spring loaded, plug-in adapters for 'Faston' Terminals provide excellent mechanical fit and electrical contact. Adapter material is brass tin-plated. The terminal adapters are available with a 6-32 thread (-1) or 8-32 thread (-2). A 1/4" panhead screw is provided as part of the adapter.

Part No. SC906-16-32 Thread

Part No. SC906-28-32 Thread



Non-Turn Washer

Brass, tin/zinc-plated washer, detailed above may be purchased as a separate item.
Part No. 19C1014.

ORDERING INFORMATION

Part Numbers: Designate as follows, using the 2 digits after the dash to indicate the number of positions.

For Faston Terminal:

Use 19101-02UL through 19101-11UL

For Solder Terminal:

Use 19001-02UL through 19001-11UL

Specials: Not available through Distributors. For special shafts, bushings, etc. contact Grayhill.