

SAM Series Multiway Switches

NEW

Features/Benefits

- Multi-directional switches
2-way & 4-way
- Actuation force 5.3N or 6N
- Footprint 20.7x18.0 mm (2-way) & 26.2x26.2 mm (4-way)
- Momentary action - SPDT

Typical Applications

- Automotive
- Industrial
- Avionics
- Joystick switch



Specifications

FUNCTION: Momentary action.
CONTACT ARRANGEMENT: SPDT per switching circuit
SWITCHING MODE: Non-Shorting
TERMINALS: THT - Through Hole Terminals

Mechanical

P/N	Force (N)	Operating Life (Cycles*)	Travel (mm)
SAM-H2-LR10SPA	6.0±2.0	30,000	1.00±0.4
SAM-H2-LR14SPA	5.3±2.0	30,000	1.25±0.4
SAM-H2-MR14SPA	5.3±2.0	30,000	1.25±0.4
SAM-H4-MR11SPA	6.0±2.0	30,000	1.00±0.4

Notes: * per direction

Electrical

RATING: 15A @ 14V DC
INITIAL CONTACT RESISTANCE: <20mΩ per switching circuit
DIELECTRIC WITHSTANDING VOLTAGE: 500VAC
INSULATION RESISTANCE: >100MΩ
BOUNCE TIME: <10ms

Environmental

OPERATING TEMPERATURE: -40°C to +85°C
STORAGE TEMPERATURE: -40°C to +85°C
SEALING LEVEL: IP30

Process

SOLDERING: Wave compatible
TERMINALS: Silver plated

Materials

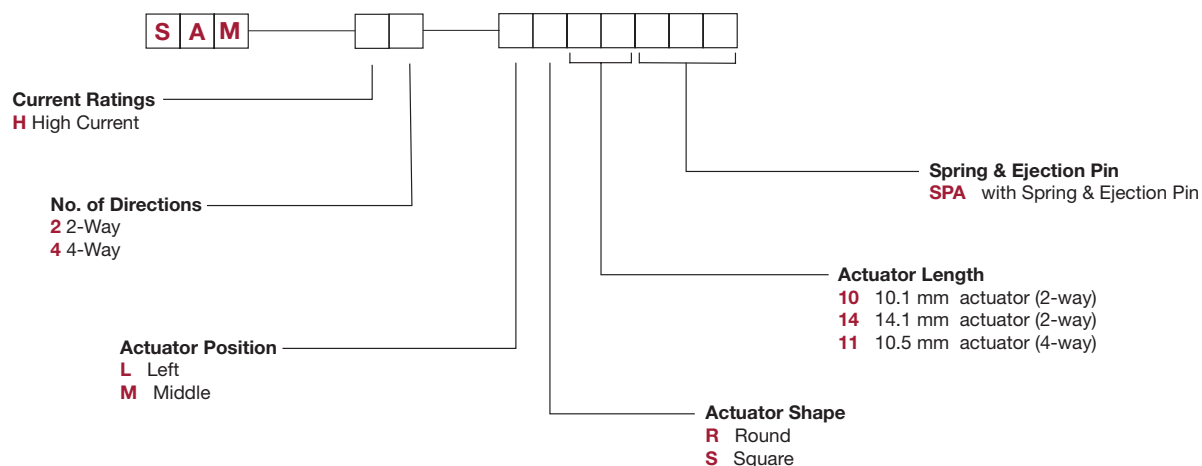
HOUSING: Polyamide UL94 HB
COVER: PBT+ASA UL94 HB
ACTUATOR: Polyamide UL94 HB
TERMINAL: Copper alloy, silver plated
CONTACT: Silver alloy

Packaging

720 pieces per box for SAM-H2-LR10SPA & SAM-H2-LR14SPA
540 pieces per box for SAM-H2-MR14SPA
264 pieces per box for SAM-H4-MR11SPA

How To Order

The Build-A Switch concept allows you to mix and match options to create the switch you need. Below is a complete listing of options shown in catalog. To order, simply select desired option from each category and place in the appropriate box.



Dimensions are shown: mm
Specifications and dimensions subject to change



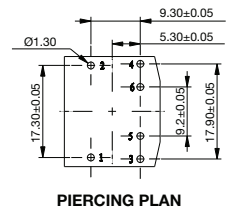
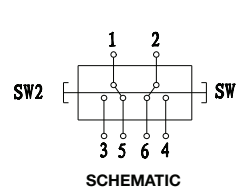
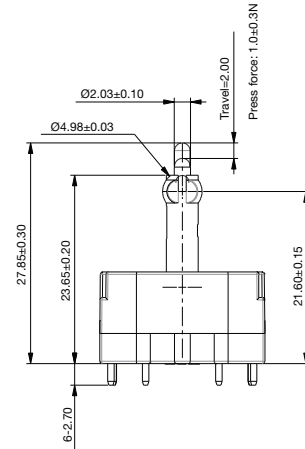
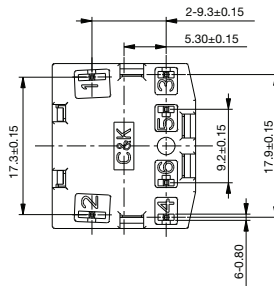
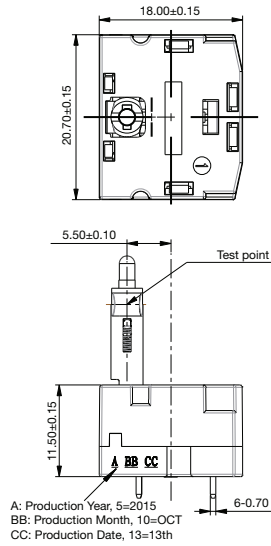
C

Navigation

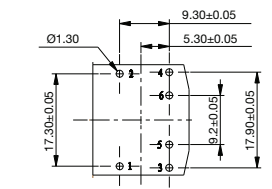
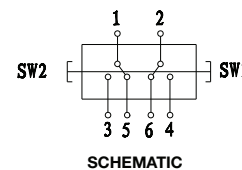
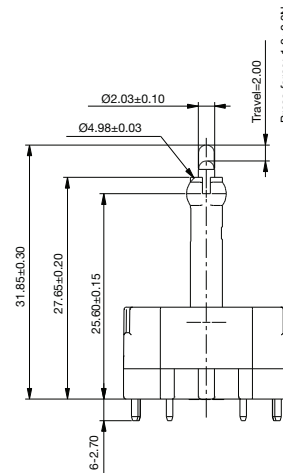
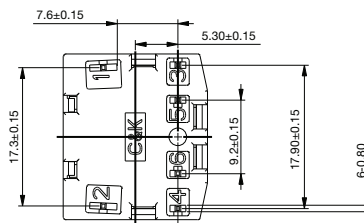
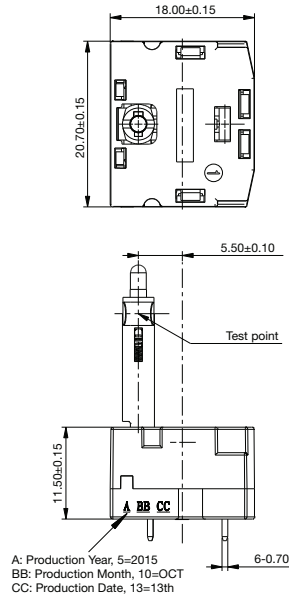
NEW

SAM Series Multiway Switches

SAM-H2-LR10SPA



SAM-H2-LR14SPA

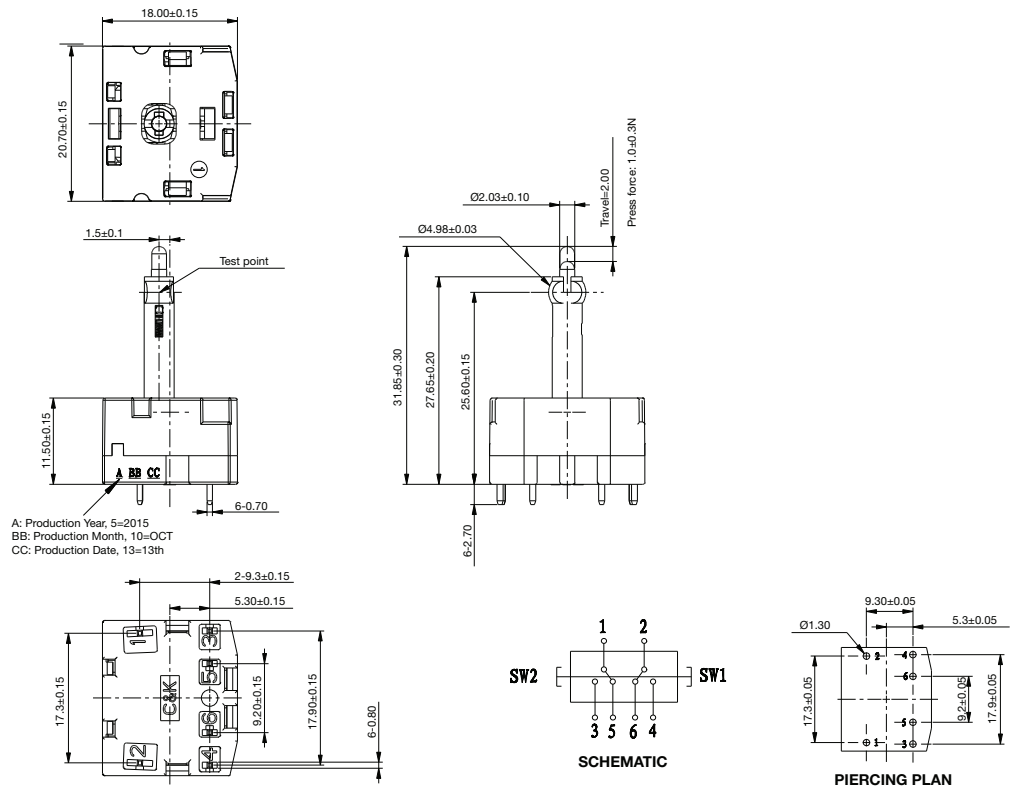


Navigation

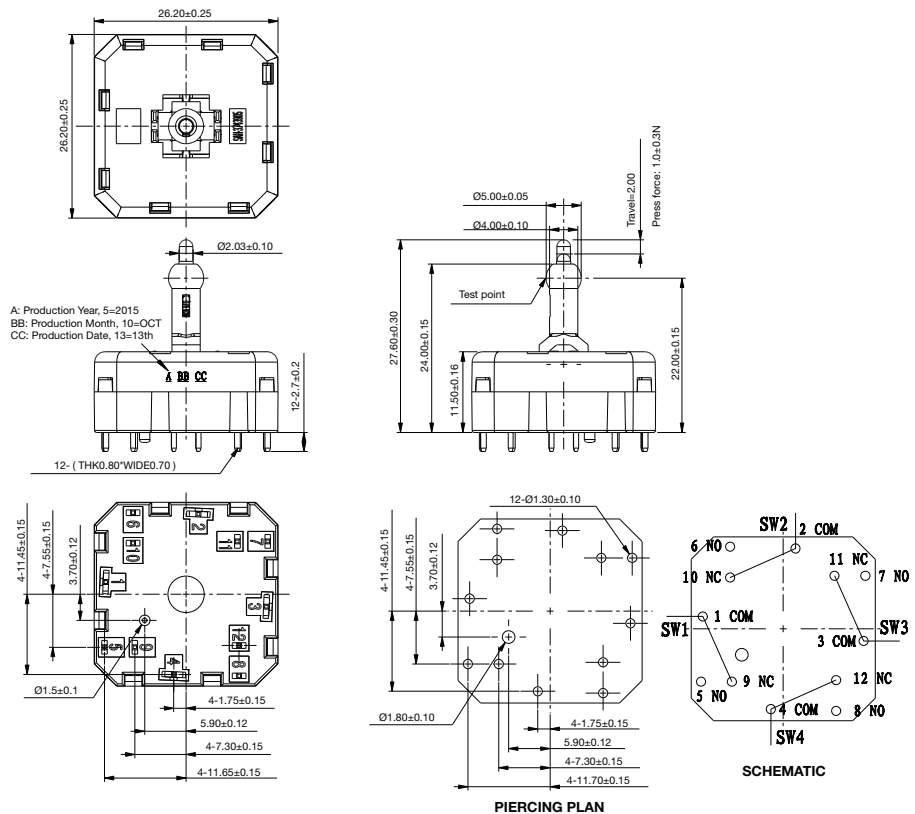
SAM Series Multiway Switches

NEW

SAM-H2-MR14SPA



SAM-H4-MR11SPA



Dimensions are shown: mm
 Specifications and dimensions subject to change

www.ckswitches.com